

U.S. ARMY CORPS OF ENGINEERS ROCK ISLAND DISTRICT

ASSOCIATED GENERAL CONTRACTORS OF AMERICA

MAJ Matthew Fletcher
Deputy Commander, Rock Island District
February 2024

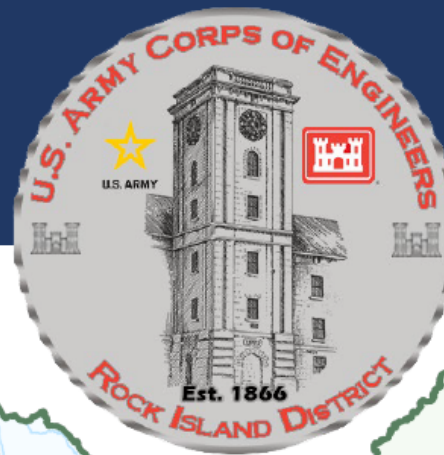


US Army Corps
of Engineers®



Rock Island District

5 River Basins | 5 States | 900+ Professionals Serving Our Nation Since 1866



MISSION

Deliver vital engineering and water resources solutions in collaboration with our partners to secure our Nation, reduce disaster risk and enhance quality of life, providing value to the region and Nation.



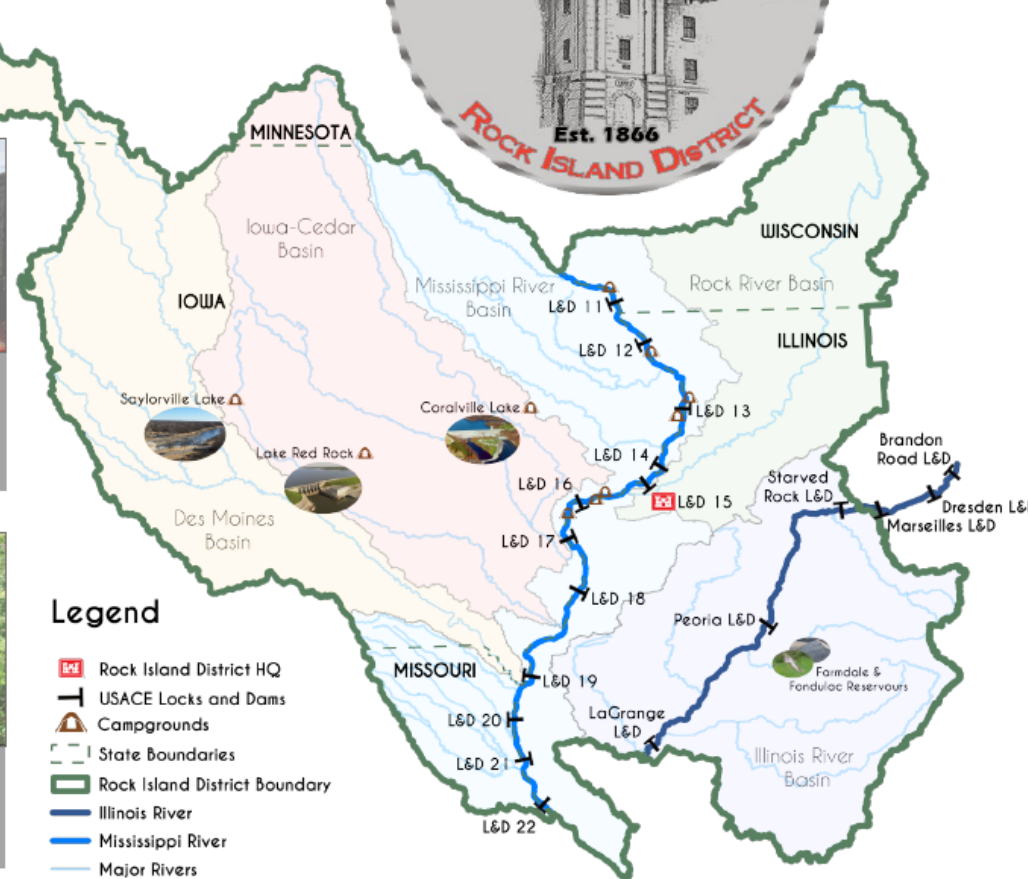
Flood Risk Management

146 Levee Drainage Systems
>900 Miles of Levees
5 Reservoirs in Iowa and Illinois
>\$17B Flood Damages Prevented



Regulatory

Lead Federal Regulatory Agency
in Iowa and Illinois
1,500 Permits Issued in FY22



Recreation

1850 Campsites
97 Recreation Sites
38 Boat Ramps
10 Swimming Beaches
5 Visitor Centers
16.8 M Annual Visitation

Flood Fight Supplies Provided to the Nation
4.2 M Standard Sandbags
6,000 Large (airlift) Sandbags
>6 Miles HESCO Gabion Baskets
>2 Miles Polyethylene Sheeting
84 Portable Pumps



Emergency Management



Environmental Stewardship

Upper Mississippi River Restoration Projects
16 In Planning/Design
7 Under Construction
59 Completed to Date
120,000 Acres Restored to Date
\$55M Annual Budget

18 Lock & Dam Sites
582 Miles of Navigation
396M Tonnage Locked
>\$1 B Annual Cost Benefit



Navigation

Commander & District Engineer
Col. Jesse T. Curry

Deputy District Engineer / PPMD Chief
Kimberly Thomas, P.E.

Deputy Commander
Maj. Matthew Fletcher

Engineering & Construction
Roger Perk, P.E.

Resource Management
Celeste Iversen

Real Estate
Paul St. Louis

Operations
Thomas Heinold, P.E.

Regulatory
Matt Zehr

Contracting
Scott Harris

National Centers

Inland Navigation Design Center
Lenna Hawkins, P.E.

National Flood Fight Materiel Center
Sarah Jones



US Army Corps of Engineers®
Rock Island District



U.S. ARMY

ROCK ISLAND DISTRICT SMALL BUSINESS PROGRAM



3

Provides outreach and information to ensure small businesses have the maximum practicable opportunity to participate in Rock Island District acquisitions through contracts or subcontracts.



Examples of Outreach and Informational Events include:

SAME Small Business Conferences

Roundtable Discussions

SAME Industry Days

District Industry Days

National Industry Meetings



SB Programs/Goals	FY23 Goals	FY23 Actual Obligations	FY23 Actual %
Small Business	48%	\$172,621,008	68.28%
Small Disadvantaged Business	30%	\$89,573,508	35.43%
Woman Owned SB	12%	\$21,752,814	8.6%
HUBZone	14%	\$36,404,744	14.4%
Service-Disabled Veteran SB	5%	\$29,344,525	11.61%

Total FY23 Contracting Obligations = **\$252,812,831**

Forecasted FY24 Contracting Obligations = **\$450M**

Program website: <https://www.mvr.usace.army.mil/Business-With-Us/Small-Business/>



U.S. ARMY

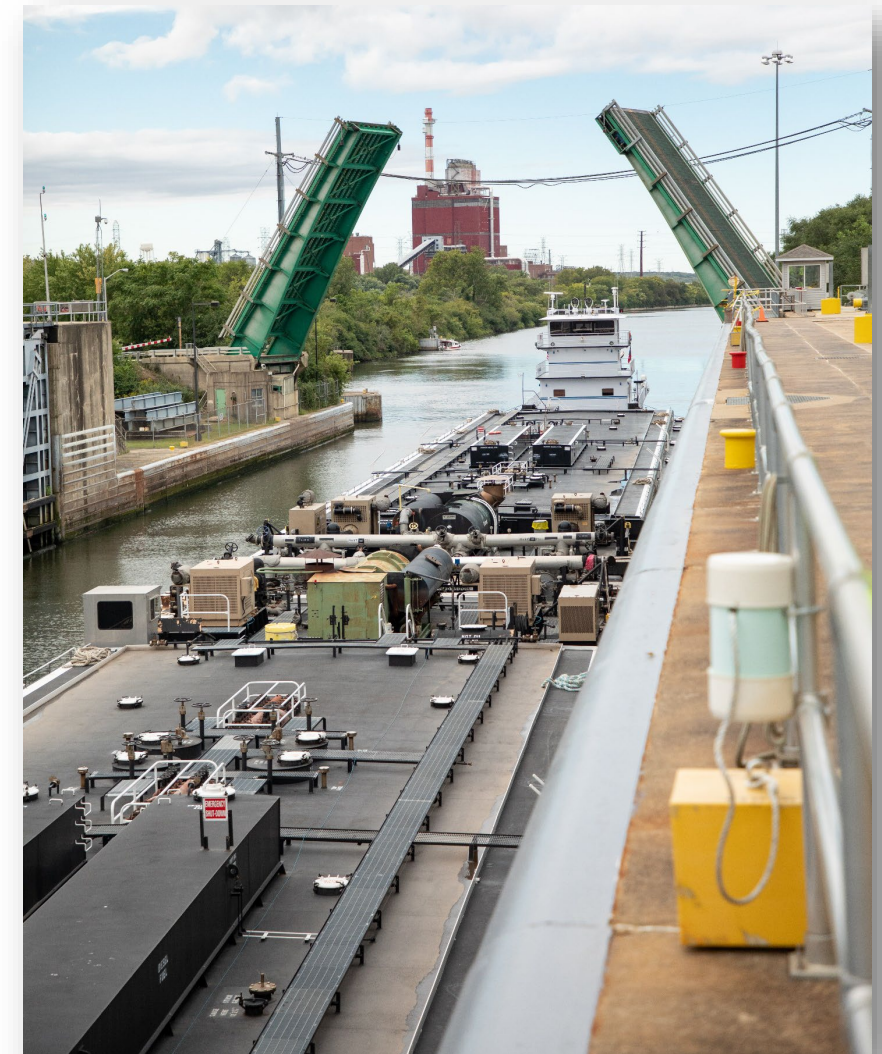
FY24 FUNDING **TBD**

4



Rock Island District **FY24 PBUD** - \$200M (Does not include final FY24 Appropriation/Earmark \$s)

- **INVESTIGATIONS - \$0M**
- **CONSTRUCTION - \$55M**
 - UMRR - \$55M
 - NESP - \$0M
 - BRIP - \$0M
- **OPERATIONS & MAINTENANCE - \$145M**
 - Mississippi River - \$76.7M
 - Illinois Waterway - \$50.8M
 - Saylorville Lake - \$6.5M
 - Lake Red Rock - \$5.4M
 - Coralville Lake - \$5.0M
 - Farm Creek - \$0.6M





U.S. ARMY

ROCK ISLAND DISTRICT FUNDING TRENDS

5



Annual Appropriation	Investigations	Construction	O&M	Total
FY 15 Allocated	900,000	33,170,000	124,218,000	158,288,000
FY 16 Allocated	1,800,000	25,036,000	151,373,000	178,209,000
FY 17 Allocated	2,300,000	42,520,000	135,558,000	180,378,000
FY 18 Allocated	2,550,000	43,430,000	180,271,000	226,251,000
FY 19 Allocated	150,000	107,578,000	164,926,000	272,654,000
FY 20 Allocated	4,500,000	58,505,000	208,457,000	271,462,000
FY 21 Allocated	8,910,000	33,170,000	179,529,850	221,609,850
FY 22 Allocated	5,190,000	90,449,000	187,731,000	283,370,000
FY 23 Allocated	0	170,559,500	178,337,000	348,896,500
FY 24 PBUD	500,000	55,000,000	145,073,000	200,573,000

Note: Does not include FPMS, PAS, CAP, ICW, and Supplemental funds.



U.S. ARMY

UPPER MISSISSIPPI RIVER RESTORATION (UMRR)

6



Design/Construction Underway

- Steamboat Island
- Beaver Island
- Keithsburg Division

Feasibility Underway

- Lower Pool 13
- Green Island
- Pool 12 Forestry
- Quincy Bay
- Lower Pool 13
Phase II



Program website:

<https://www.mvr.usace.army.mil/Missions/Environmental-Stewardship/Upper-Mississippi-River-Restoration/>



U.S. ARMY

OPERATIONS & MAINTENANCE – MISSISSIPPI RIVER



Mississippi River Project

- Keel Rail Replacement
- Lock Guidewall Work
- Dam Valve Fabrication
- Dam Gate Fabrication
- Dredging





U.S. ARMY

OPERATIONS & MAINTENANCE – ILLINOIS WATERWAY

8



Illinois Waterway Project

- Electrical & Controls Work
- Generator & Compressor Work
- Bulkhead Fabrication
- Sheet Pile Installation
- Dredging





U.S. ARMY

OPERATIONS & MAINTENANCE – FLOOD RISK MANAGEMENT LAKES

9



Saylorville Lake

- Paving Work
- Water infrastructure Updates



Lake Red Rock

- Paving Work



Coralville Lake

- Shoreline Erosion Repairs
- Paving Work
- Restrooms & Shower Building Upgrades & Replacements
- Ranger & Admin Building Renovations



U.S. ARMY



RESERVOIRS



Project	Location	Anticipated Advertisement	Estimated Range
DB – Coralville Lake Ranger and Admin BLDG	Coralville, IA	2nd Qtr FY24	\$1M-\$5M



U.S. ARMY

PL 84-99 REHABILITATION STATUS

11



Design Phase: 1

Solicitation/Contract Negotiation: 0

Contract Award/In Construction: 5

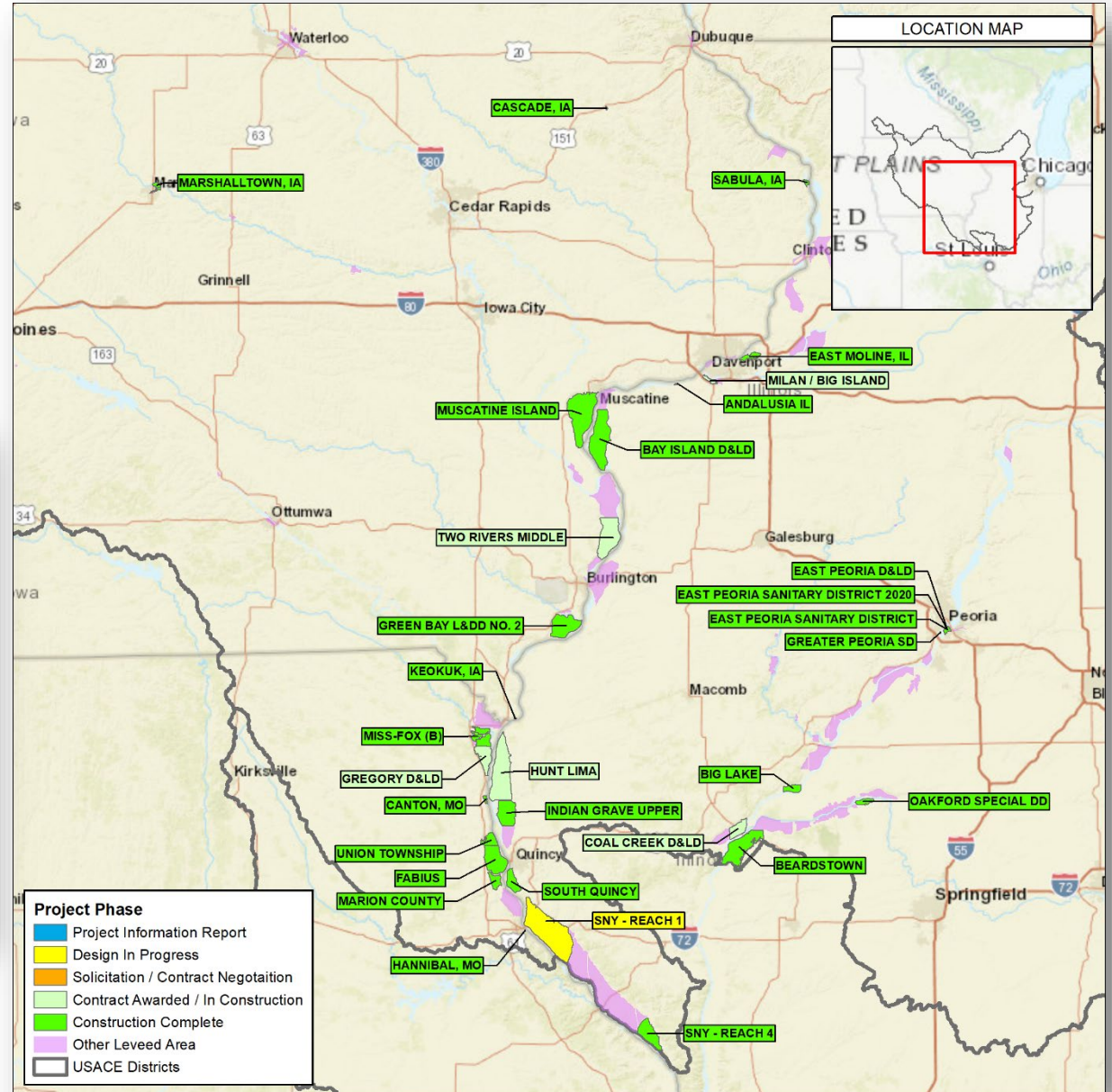
Complete: 25

Total Projects: 31



Program website:

<https://www.mvr.usace.army.mil/Missions/Flood-Risk-Management/Levee-Safety-Program/Public-Law-84-99-Program/>





U.S. ARMY

FLOOD RISK MANAGEMENT

12



Project	Location	Anticipated Advertisement	Estimated Range
Dubuque Forced Sewer Main CAP Sec 14	Dubuque, IA	2 nd Qtr FY24	\$1M-\$5M



U.S. ARMY

NAVIGATION & STRUCTURAL

13



Project	Location	Anticipated Advertisement	Estimated Range
Marseilles Electrical System	Marseilles, IL	3 rd Qtr FY24	\$10M-\$25M
LD 16, 18, & 20 Kevel Rail Replacement	Multiple	4th Qtr FY24	\$1M-\$5M
LD21 Phase 2 Concrete Repairs	Quincy, IL	4th Qtr FY24	\$1M-\$5M

CIVIL, CHANNEL & ECOSYSTEM RESTORATION



Project	Location	Anticipated Advertisement	Estimated Range
UMRR Steamboat Island Stage 2 HREP	Clinton, IA	1st Qtr FY24	\$1M-\$5M



U.S. ARMY

BUILDING RENOVATIONS – 88TH RD & OTHERS

15



Project	Location	Anticipated Advertisement	Estimated Range
88th RD - Repair HVAC and Electrical Systems, Building 510	Ft. Snelling, MN	3rd Qtr FY24	\$1M-\$5M
88th RD - Repair HVAC & Electrical Systems, AMSA/OMS Building	Whitehall, OH	3rd Qtr FY24	\$1M-\$5M
88th RD - Repair and Replace Elevators, Building 203	Arlington Heights, IL	2nd Qtr FY24	\$500K-\$1M
88th RD - Repair HVAC and Electrical Systems, USARC Building	Livonia, MI	3rd Qtr FY24	\$1M-\$5M
88th RD - Repair Foundation and Building Repairs	Twinsburg, OH	3rd Qtr FY24	\$1M-\$5M
88th RD - Building 317 LED Lighting Upgrade	Milwaukee, WI	4th Qtr FY24	\$100K-\$500K
Clock Tower Third Floor Renovations	Rock Island, IL	1st Qtr FY24	\$1M-\$5M
DB - Coralville Ranger and Admin Bldg	Coralville, IA	2d Qtr FY24	\$500K-\$1M



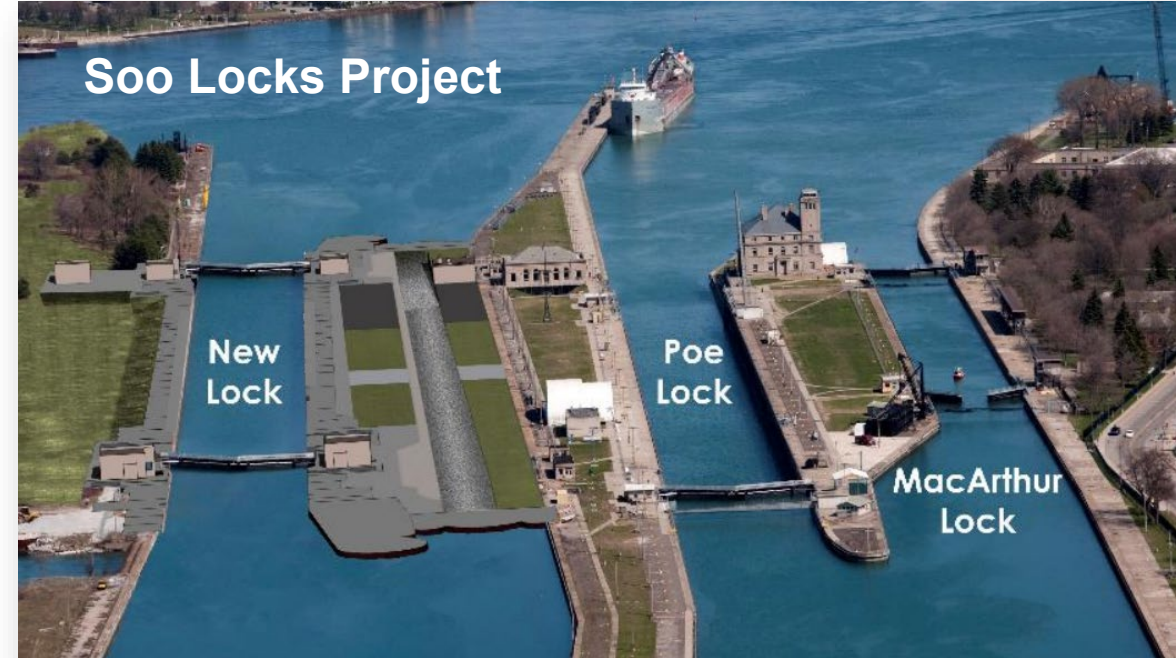
U.S. ARMY

INLAND NAVIGATION DESIGN CENTER (INDC)

16



The Inland Navigation Design Center (INDC) Mandatory Center of Expertise (headquartered in the Rock Island District) provides engineering, design, analysis, and review services for studies, new locks, new navigational dams, major rehabilitation of existing inland navigation locks and dams, and significant inland navigation lock and dam operations and maintenance projects, while promoting quality design and consistency in design and technical competency.



INDC is currently the designer of record for the:

- Soo Locks
- Upper Ohio Locks
- Brandon Road Interbasin Project
- Brazos River Floodgates
- Lock 25 (NESP)



U.S. ARMY

BRANDON ROAD INTERBASIN PROJECT

17



INCREMENT I-A

- Automated Barge Clearing Deterrent
- Leading Edge Bubble Deterrent
- Leading Edge Acoustic Deterrent Array
- Leading Edge Support Facilities
- Upstream Boat Launch

INCREMENT I-B

- Site Prep
- Channel Rock Excavation

INCREMENT II

- Electric Deterrent
- Large Acoustic Deterrent Array
- Support Facilities
- Engineered Channel floor & walls for the electric & large acoustic deterrents
- Flushing Lock
- Downstream Boat Launch

INCREMENT III

- Finish Engineered Channel
- Connect RDB Wall to Lower Guidewall



Project website: <https://www.mvr.usace.army.mil/Missions/Environmental-Stewardship/BR-Interbasin-Project/>

Project	Anticipated Contract Type	Anticipated Advertisement ¹	Estimated Range
Increment I-A Construction	Construction	1 st Qtr FY24	\$100M-\$200M
Increment II & III AE Design	AE Services	4 th Qtr FY24	\$25M-\$75M
Increment I-B Construction	Design Build	4 th Qtr FY24	\$100M-\$200M
Increment II Construction	Construction	2 nd Qtr FY26	\$400M-\$600M
Increment III Construction	Construction	2 nd Qtr FY29	\$25M-\$50M

¹PROPOSED INCREMENTS SUBJECT TO CHANGE PENDING COMPLETION OF DESIGN & EXECUTION OF A PPA.



U.S. ARMY

18



BRANDON ROAD INTERBASIN PROJECT

Increment I-A Site Features



Project	Anticipated Contract Type	Anticipated Advertisement ¹	Estimated Range
Increment I-A Construction	Construction	1 st Qtr FY24	\$100M-\$200M

¹PROPOSED INCREMENTS SUBJECT TO CHANGE PENDING COMPLETION OF DESIGN & EXECUTION OF A PPA.



U.S. ARMY



US Army Corps
of Engineers®

NAVIGATION AND ECOSYSTEM SUSTAINABILITY PROGRAM (NESP)

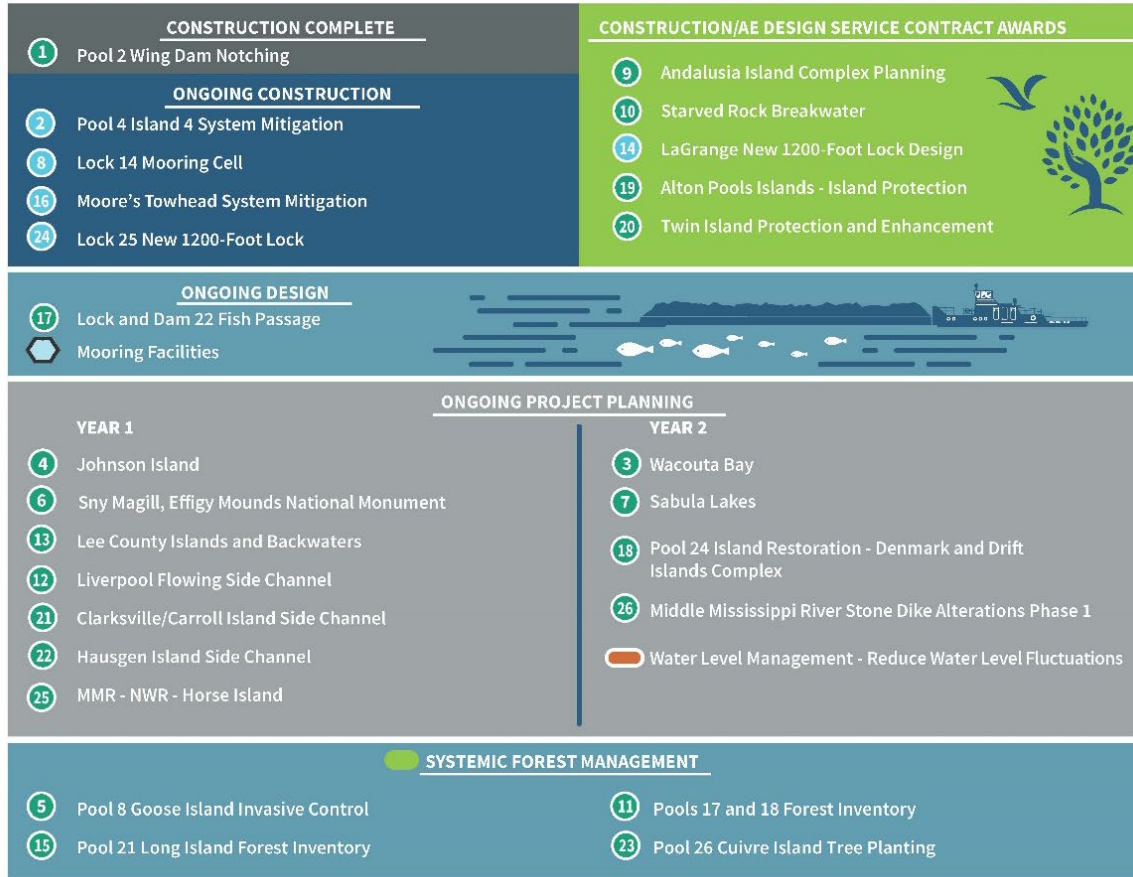
ST. PAUL DISTRICT- ROCK ISLAND DISTRICT - ST. LOUIS DISTRICT

NAVIGATION AND ECOSYSTEM PROJECTS

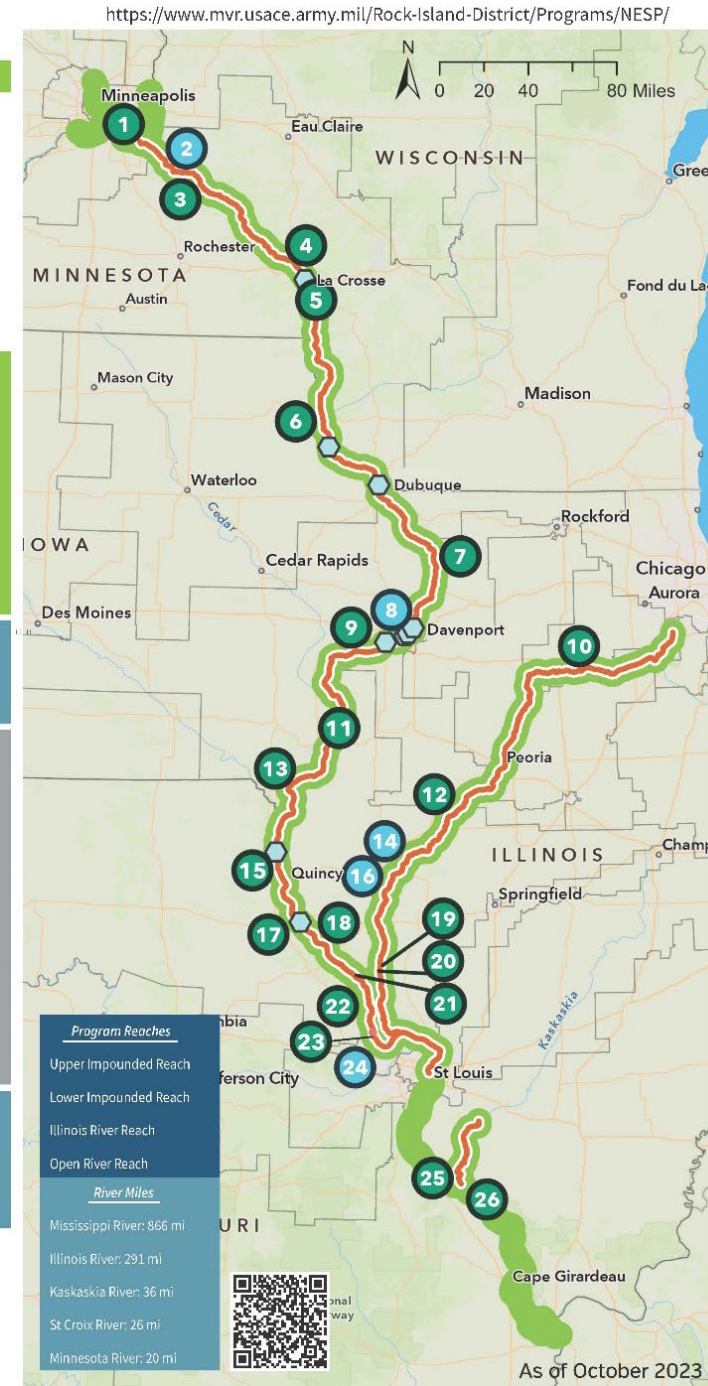
The Navigation and Ecosystem Sustainability Program (NESP) is a long-term, dual-purpose program that integrates navigation improvements and ecosystem restoration together to provide Upper Mississippi River System once in a generation-type positive impacts.

The primary goals of the program are to increase the capacity and improve the reliability of the inland navigation system while restoring, protecting, and enhancing the environment.

This map only shows projects actively being implemented. NESP includes an additional 5 - 1,200-foot locks, systemic mitigation, and hundreds of ecosystem restoration projects.



NESP PARTNERS





U.S. ARMY

NESP UPCOMING SOLICITATIONS

20



Project	FY24 Contract Action	Approximate Solicitation Timeframe
NESP Navigation - Lock 25 New 1200' Lock Maintenance Building (St Louis District)	Design Build	FY24
NESP Navigation - LaGrange New 1200' Lock (Rock Island District)	Machinery Fabrication Contract	FY24 (pending appropriations)
NESP Navigation – Mooring Facilities (8 total locations, Rock Island and St Paul Districts)	Construction contract(s)	FY24 (pending appropriations)
NESP Ecosystem – Lock and Dam 22 Fish Passage	Construction contract	3rd Quarter FY24

NAVIGATION AND ECOSYSTEM SUSTAINABILITY PROGRAM (NESP)

ST. PAUL DISTRICT- ROCK ISLAND DISTRICT - ST. LOUIS DISTRICT

LOCK AND DAM 25 NEW 1,200-FOOT LOCK

As of 2-Feb-24

21



PROJECT SUMMARY

Lock and Dam 25 is located in Calhoun County, Illinois, and Lincoln County, Missouri, at approximately river mile 241.4 on the Upper Mississippi River above the mouth of the Ohio River near Winfield, Missouri. The project will be delivered via Integrated Design and Construction (IDaC) a delivery method that integrates construction contractor input through the design development.

The primary purpose of the Lock and Dam 25 New 1,200-Foot Lock Project is to improve efficiency, reliability, and safety for navigation traffic transiting the facility along with operational redundancy at Lock 25.

The project will reduce the per lockage times from 2.5 hours or more to approximately 45 minutes. The addition of a 1,200-foot lock will accommodate the largest tow configurations on the Upper Mississippi River. This will improve mariner safety, with professional mariners no longer having to "split" tows to transit the lock chamber.

OBJECTIVES

- 

1 Safely deliver a quality 1,200-foot lock efficiently and cost effectively
- 

2 The goal is to construct the project while minimizing impacts and maintaining predictability to existing navigation traffic
- 

3 Navigation stakeholders will be integrated throughout the design and construction

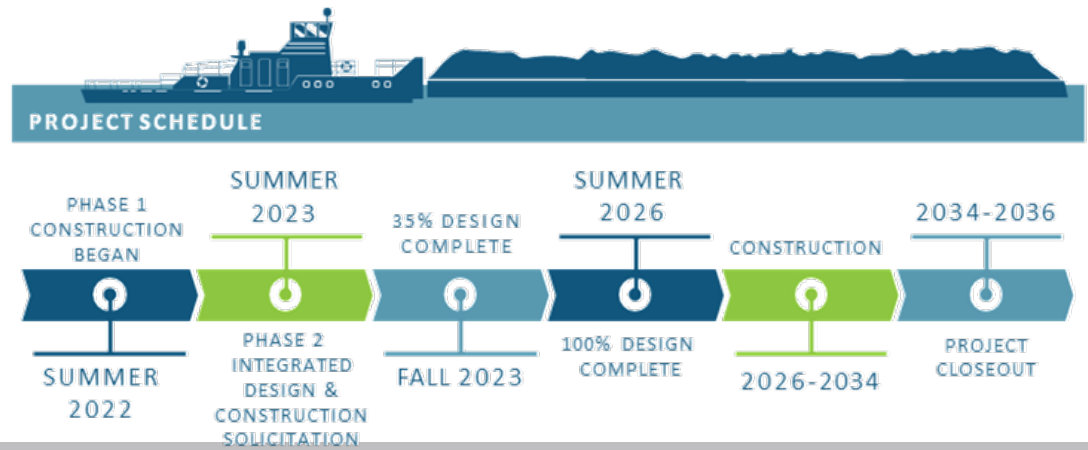
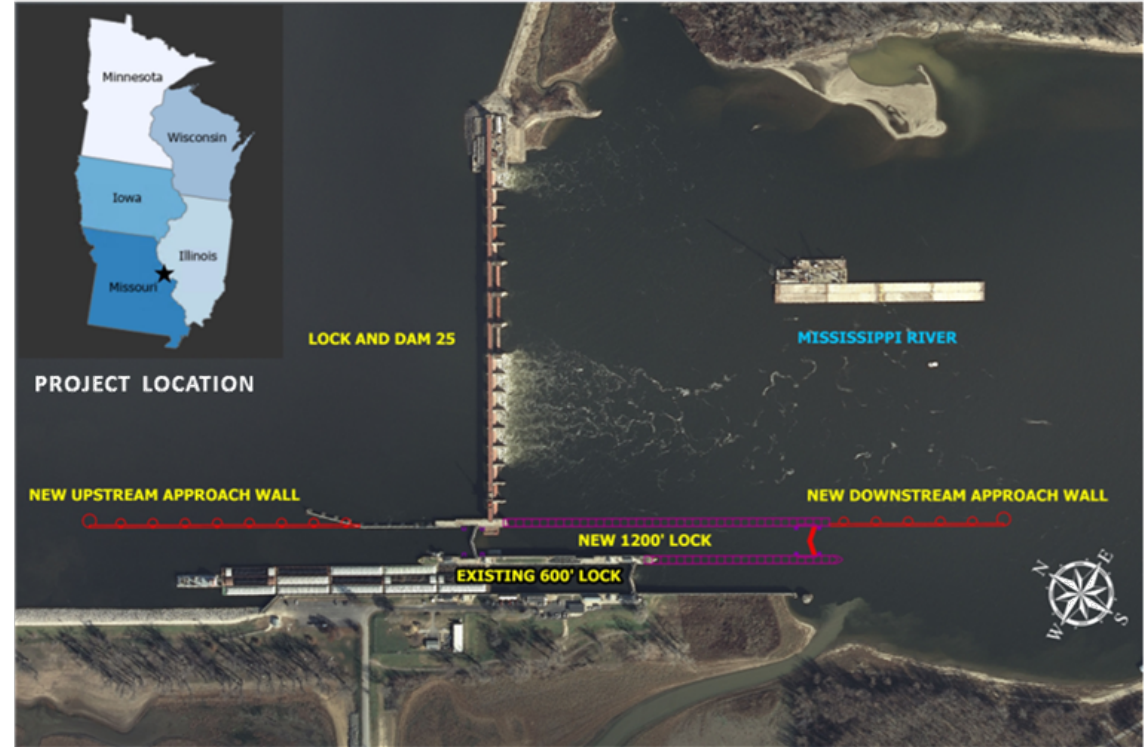
DESIGN OVERVIEW

- Re-initiated – Oct 2022
- 15% level of maturity
- 35% Review phase began – Jun 2023
- 35% Design complete – Nov 2023
- 100% Design complete – Jun 2026

CONSTRUCTION OVERVIEW

- Phase 1 – Lockwall modifications
 - Est. Construction complete – May 2024
- Phase 2 – Bulkhead Supply
 - Est. Award – Mar 2024
- Phase 2 – Integrated Design Construction (IDaC)
 - Solicitation – Jun 2023
 - Est. Award – Mar 2024

ESTIMATED
COST
>\$20M





U.S. ARMY



NAVIGATION AND ECOSYSTEM SUSTAINABILITY PROGRAM (NESP)

ST. PAUL DISTRICT- ROCK ISLAND DISTRICT - ST. LOUIS DISTRICT

As of 1-Feb-24



LAGRANGE NEW 1,200-FOOT LOCK

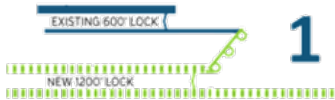
PROJECT SUMMARY

LaGrange Lock and Dam is 80.2 miles above the confluence of the Illinois River with the Mississippi River at Grafton, Illinois, 7.8 miles below Beardstown, Illinois.

The primary purpose of the LaGrange New 1,200-Foot Lock Project is to improve efficiency, reliability, and safety for navigation traffic transiting the facility along with additional operational redundancy at LaGrange.

The project will reduce the per lockage times from 2.5 hours or more to approximately 45 minutes. The addition of a 1,200-foot lock will accommodate the largest tow configurations on the Upper Mississippi River. This will improve mariner safety, with professional mariners no longer having to "split" tows to transit the lock chamber.

OBJECTIVES



1

New 1,200-foot navigation lock landward of the existing 600-foot lock



2

Construction will occur with minimal interference to existing navigation traffic



3

Existing 600-foot lock will remain in operation

DESIGN ACTIVITIES

FY22 Activities

Award of A/E design task order that includes:

- Initial lock design
- Hydraulic modeling
- Geotechnical investigations
- Aerial/site surveys
- Environmental compliance surveys
- Cultural surveys
- HTRW analyses
- Real estate
- Physical model (ERDC)

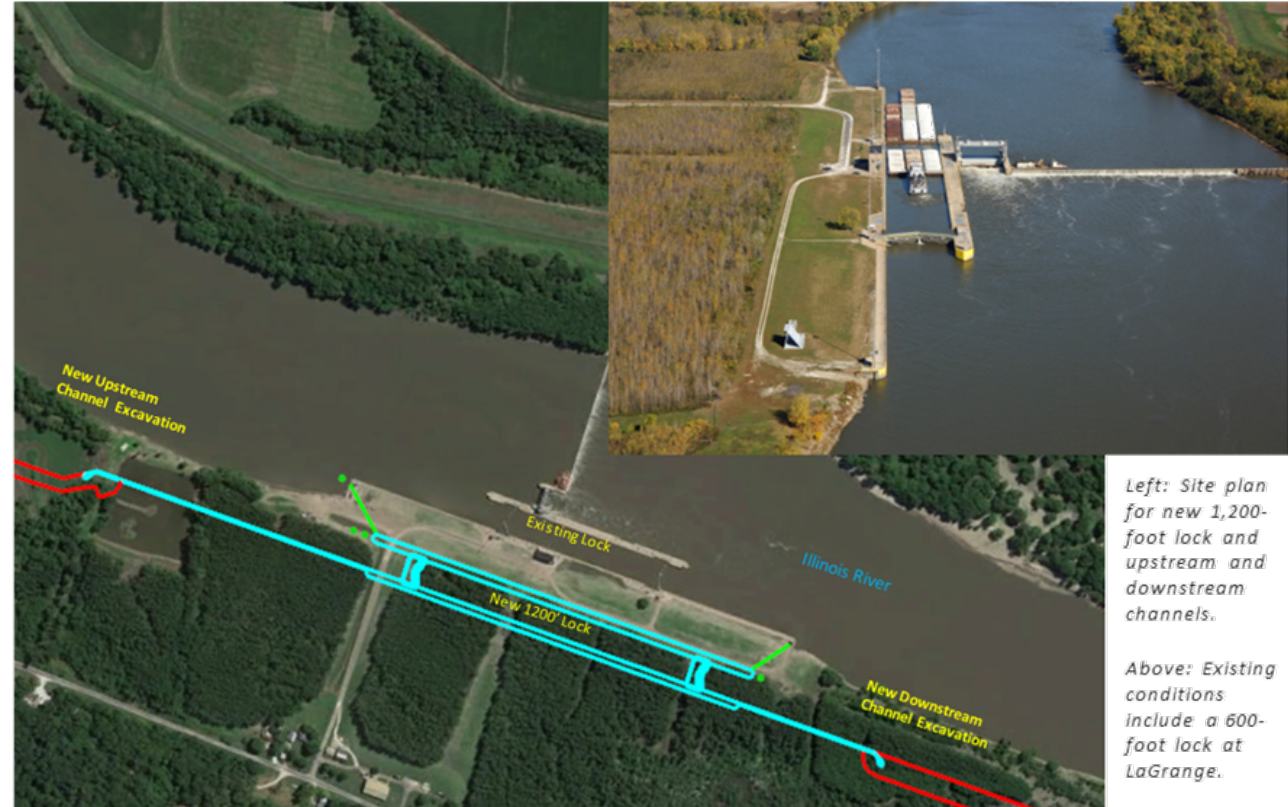
FY23 Activities

35-100% design task order is scheduled to award Sept 2023

- Real estate activities
- Industry coordination – navigation & construction contractor
- Physical model testing (ERDC)
- Continued design of 1,200-foot lock

FY24 Priorities

- Construction contract award for machinery fabrication
- 35-100% design plans and specifications
- Real estate acquisition
- Physical model completion



Left: Site plan for new 1,200-foot lock and upstream and downstream channels.

Above: Existing conditions include a 600-foot lock at LaGrange.

ESTIMATED
COST
> \$20M





U.S. ARMY



US Army Corps
of Engineers®

NAVIGATION AND ECOSYSTEM SUSTAINABILITY PROGRAM (NESP)

ST. PAUL DISTRICT- ROCK ISLAND DISTRICT - ST. LOUIS DISTRICT

As of 2-Feb-24

LOCK AND DAM 22 FISH PASSAGE

PROJECT SUMMARY

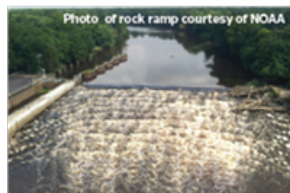
Lock and Dam 22 is located near Saverton, Missouri, on the Mississippi River, roughly 10 miles south of Hannibal, Missouri, at river mile 301.2. The fish passage structure will be constructed on the spillway portion of the dam, on the side furthest from the Illinois shoreline, and would extend downstream into the tailwater area.

The primary purpose of the Lock and Dam 22 Fish Passage Project is to increase fish access to upstream mainstream river and tributary habitats. Increased access to upriver habitat should result in an increase in the size and distribution of native migratory fish populations.

The secondary purpose is to monitor and adaptively manage this structure to optimize its effectiveness and inform design of subsequent fish passage projects.

RISK-INFORMED FISH PASSAGE IMPROVEMENT STRATEGY

The Recommended Plan developed during the feasibility phase of this project imitates the natural river to maximize the effectiveness of the native fish passage while minimizing impacts to navigation.



Project Deliverables & Tasks:

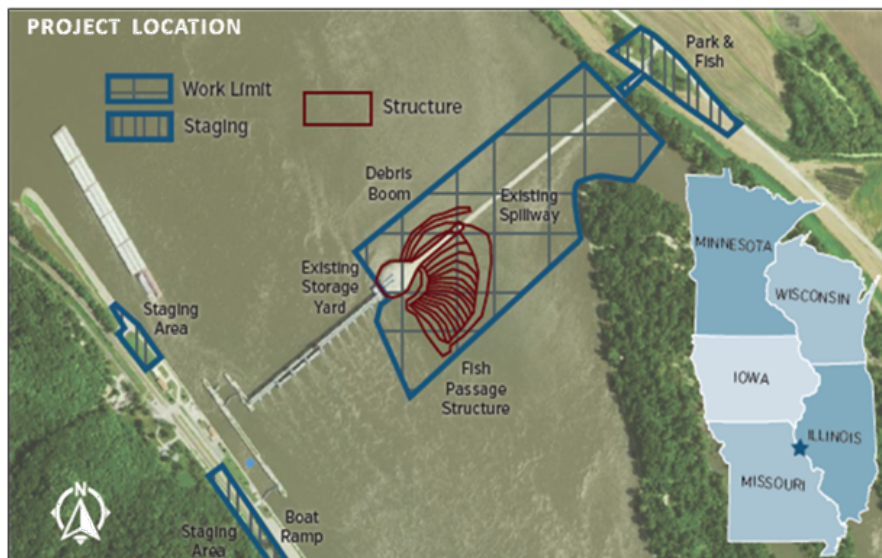
- 26Sep22 – AE Design Awarded
- 30Sep22 – Completion of 35% Design
- May 2023 – 65% Design Completion
- Feb 2024 – 100% Design Completion
- Jun 2024 – Construction Solicitation RFP
- Sep 2024 – Construction Award
- Sep 2027 – Construction Complete

Monitoring Activities & Adaptive Management

- FY22-24 – Pre-Construction Monitoring
- FY25-27 – Construction Monitoring
- FY28-32 – Post-Construction Monitoring
- FY28-32 – Adaptive Management

Lock and Dam 22 Fish Passage Monitoring

- Inform Project Design and Construction
- Monitor Fish Movement through Lock 22 and Fishway
- Monitor Systemic Ecological Response by Migratory Fishes
- Monitor Physical Performance of the Fish Passage Improvement Features
- Monitor Effects of the Project on Structural Integrity, Navigation Operations, Water Quality



DESIGN

- HQUSACE approved
- Final PIR June 2022
- Implementation Review Plan
- Single Phase—Inlet Structure & Ice/Debris Structure; Rock Arch Fish Passage

CONSTRUCTION

- Single Phase—Inlet Structure & Ice/Debris Structure; Rock Arch Fish Passage

ADAPTIVE MANAGEMENT

- Pre-Construction Monitoring
- Construction Monitoring
- Post-Construction Monitoring
- Adaptive Management

BI-PARTISAN INFRASTRUCTURE LAW (BIL) FUNDS: \$97,100,000 for design and construction initiation

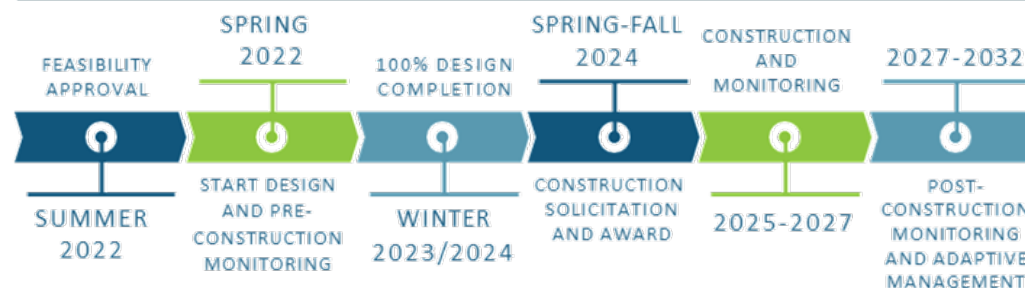
OBJECTIVES

- 1 Provide habitat benefits for over 30 fish species
- 2 Restore natural connection between pools
- 3 Increase migration capabilities for native fish species
- 4 Provide spawning habitat for fish

ESTIMATED
COST
>\$10M



PROJECT SCHEDULE



PROGRAM PARTNERS





U.S. ARMY

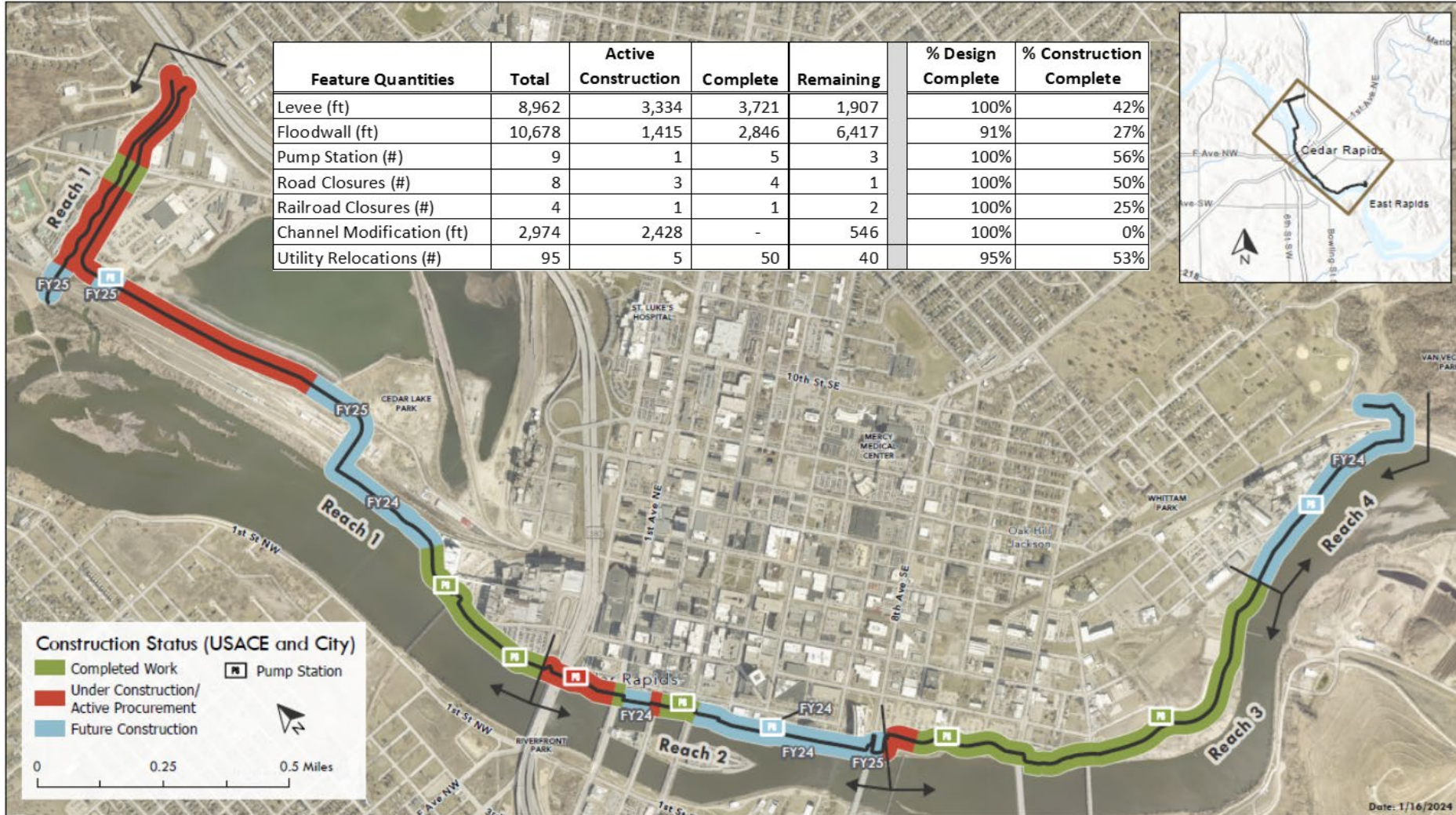
CEDAR RAPIDS, IOWA FLOOD RISK MANAGEMENT PROJECT

24



US Army Corps
of Engineers
Rock Island District

CEDAR RAPIDS FLOOD RISK MANAGEMENT EAST SIDE CONSTRUCTION STATUS





U.S. ARMY

CEDAR RAPIDS, IOWA FLOOD RISK MANAGEMENT PROJECT

25



Project	Project Location	Anticipated Advertisement	Estimated Range
5th Ave SE Gatewell / Pump Station (CITY)	Downtown	Spring 2024	\$1M-\$5M
Downtown East Removable & Permanent Floodwall (USACE)	Downtown	Summer 2024	\$25M-\$50M
Cedar Lake South Railyard Floodwall (USACE)	Cedar Lake	Summer 2024	\$10M-\$25M
Downstream River Floodwall, Pump Station, Culverts and Closures (USACE)	South Industrial	Fall 2024	\$50M-\$100M
Cedar Lake Railyard Advanced Track Work (CITY)	Cedar Lake	Fall 2024	\$1M-\$5M
Cedar Lake Railyard Roller Gate Closure Structures (USACE)	Cedar Lake	Winter 2024/2025	\$10M-\$25M
Cedar Lake South Shore Levee (CITY)	Cedar Lake	Winter 2024/2025	\$5M-\$10M
Cedar Lake Pump Station (CITY)	Cedar Lake	Spring 2025	\$10M-\$25M
McCloud Run Lower Reach Culverts (USACE)	McCloud Run Channel	Spring 2025	\$5M-\$10M
8th Ave SE Floodwalls (CITY)	Downtown	Summer 2025	\$1M-\$5M



U.S. ARMY

SOUTHWEST COASTAL, LOUISIANA PROJECT OVERVIEW

26



Project Purpose

3,462 RESIDENTIAL STRUCTURES ELIGIBLE TO BE RAISED | **342** DRY FLOOD-PROOFING | **157** Localized Risk Reduction

The Project includes structures at or below the 2025- 25-year base flood elevation (BFE).



The Project recommends 3,462 residential structures will be considered for elevation equivalent to the 2075 100-year BFE. Qualifying residential structures will be raised approximately 5 feet on average, but no higher than 13 feet.



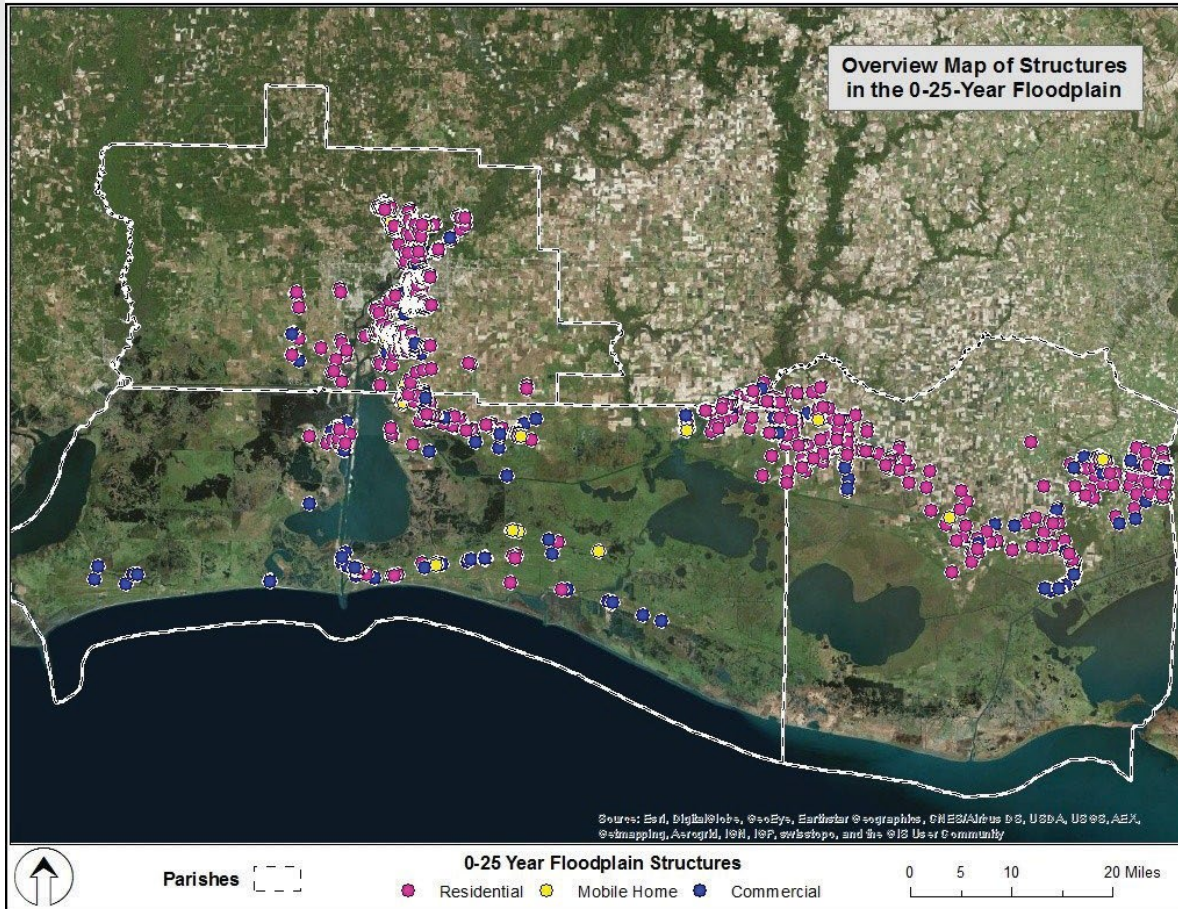
342 non-residential structures will be considered for dry flood-proofing to 3 feet above ground.



Localized risk reduction measures (constructing berms) for 157 warehouses will be considered less than or equal to 6 feet above the ground.

NEXT STEPS

- Available Appropriations for Construction = \$296M
- Project Partnership Agreement expected in Apr 2023
- A&E Services support expected for screening and inspections
- Design Build Contracts required by Authorization



Location: Cameron, Calcasieu, and Vermilion Parishes



U.S. ARMY

UPCOMING A-E SERVICES IDIQ MATOCS

27



- **\$49 Million IDIQ MATOC**
 - Restricted to Small Business
 - Minimum of 3 contracts to be awarded
 - SF330s were due December 2023
 - Award Q3-FY24
- **\$200 Million IDIQ MATOC**
 - Unrestricted
 - Minimum of 3 contracts to be awarded
 - SF330s were due January 2024
 - Award Q4-FY24





U.S. ARMY

UPCOMING AE SERVICES IDIQ MATOC: TECHNICAL REQUIREMENTS

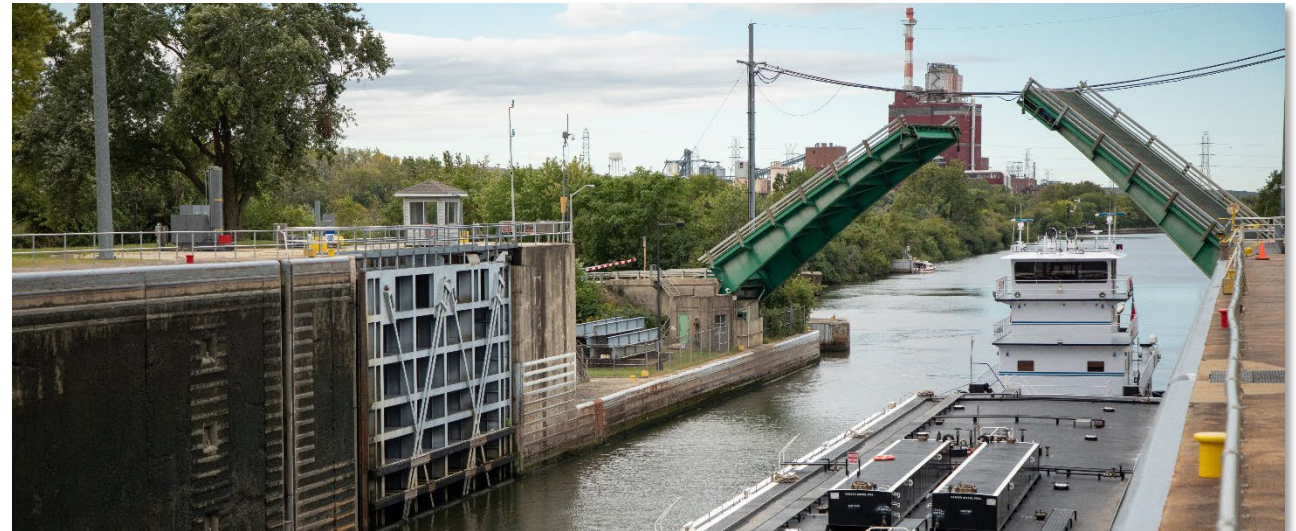
28



Location of Projects: The services will be performed primarily in connection with projects located within the St. Paul, Rock Island, and St. Louis District's geographic boundaries (all or portions of MN, ND, SD, WI, IL, MO and IA). However, individual task orders may be for work anywhere within the Continental United States (CONUS).

Primary Disciplines: structural, civil, geotechnical, geology, hydraulic, hydrologic, mechanical, electrical, specifications, and cost engineering

Other Disciplines: architecture, landscape architecture, construction engineering, surveying, environmental engineering, and cartography





U.S. ARMY

UPCOMING EVENTS

27 February 2024	NESP Virtual Industry Day
29 February 2024	St. Louis District Small Business Industry Day
27 March 2024	New Orleans District Small Business Industry Day
2-3 April 2024	SAME Rock Island Post Small Business Industry Day
17-18 April 2024	SAME SMPS/St. Louis Industry Day
25 April 2024	Vicksburg District Small Business Industry Day
29-31 May 2024	Omaha Industry Day
12-13 June 2024	GKC SAME Post Industry Day



U.S. ARMY

DOING BUSINESS WITH US

30



Websites for Industry Partners:

www.mvr.usace.army.mil/Business-With-Us/Small-Business/

www.mvr.usace.army.mil/Business-With-Us/Contracting/

- Upcoming training for industry or outreach events
- Contract Forecast Lists
- How-To's for Finding Opportunities
- Subcontracting Opportunities

Individualized Meetings Available to Discuss:

- Projects/programs and doing business with the District
- Potential connection with other District personnel and/or other resource partners
- Inclusion on District email list for ongoing communication

The screenshot displays the 'Small Business Program' page on the US Army Corps of Engineers Rock Island District Website. The page includes a navigation bar with links like 'About', 'Business With Us', 'Missions', 'Locations', 'Careers', 'Media', 'Library', and 'Contact'. A search bar is located in the top right corner. The main content area features a 'Small Business Program' section with text explaining the program's purpose and goals. Below this, there is a 'FY24 Rock Island District Forecast' table. To the right, there is a 'SAM.GOV' logo and a section for '2023 SAME ROCK ISLAND POST SMALL BUSINESS INDUSTRY DAY' with a date of 22 March 2023 and a link to view a presentation. At the bottom, there is a 'Useful Links/Resources' section with links to 'SAM.gov', 'Find Contracting Opportunities', 'Rock Island District Contracting', and 'USACE Small Business Program Website'.

Project Title and Description	Anticipated Dollar Value	NAICS/PSC	Anticipated Set-Aside Decision	Action/Award	Anticipated Solicitation Date	Anticipated Award Date
Clock Tower 3rd Floor Remodel	\$1M-\$5M	237990	Facilities MATOC	Task Order	Q1FY24	Q1FY24
OD-C Ranger and Admin BLDG	\$5M-\$10M	236220	Small Business Set Aside Design Build	Standalone	Q1FY24	Q1FY24
Coal Creek D&LD- Erosion Repair	\$1M-\$5M	237990	SDVOSB IFB	Standalone	Q1FY24	Q2FY24
Sabula, IA - Erosion Repair	\$250K-\$500K	237990	WOSB IFB	Standalone	Q1FY24	Q2FY24
Clinton, IA - Erosion Repair	\$1M-\$5M	237990	Small Business IFB	Standalone	Q1FY24	Q2FY24
Sny Island L&DD Reach 3 - Erosion Repair	\$1M-\$5M	237990	Small Business IFB	Standalone	Q1FY24	Q2FY24



U.S. ARMY

STAY CONNECTED

31



On Social Media



www.linkedin.com/company/us-army-corps-of-engineers-rock-island-district



www.facebook.com/RockIslandDistrictUSACE



<https://twitter.com/USACERockIsland>



www.instagram.com/usacerockisland/



www.youtube.com/c/USACERockIslandDistrict

On the Web

The screenshot displays the USACE Rock Island District website's 'FY 2023 In Review' page. The header includes a search bar and navigation links. The main content area is divided into several sections: a large headline with a '\$411 M' figure, a pie chart showing program breakdowns (Investigation, Construction, O&M, Regulatory, etc.), and various statistics and milestones. A sidebar on the right provides quick links to navigation, rivergages, recreation, permits, and public notices. The footer contains social media links and a news releases section.

www.mvr.usace.army.mil



U.S. ARMY

POINTS OF CONTACT

32



Rock Island District Commander
Col. Jesse Curry
(309) 794-5249

Engineering & Construction

Roger Perk
(309) 794-5227

Programs & Project Management

Kimberly Thomas
(309) 794-5260

Operations Division

Tom Heinold
(309) 794-5401

Construction Branch

Richard Busch
(309) 794-5480

Contracting Division

Scott Harris
(309) 794-5628

Small Business Programs

Troy Robbins
(309) 794-5205

Regulatory Branch

Ward Lenz
(309) 794-5370

Emergency Management

Sarah Jones
(309) 794-5206

Inland Navigation Design Center

Lenna Hawkins
(412) 862-7536

Safety Award Nomination

Better By Design LLC (BBD)

W912EK20D0030–W912EK22F0064, Howell Station, North Overlook, and Fifield Waterline Replacement, Lake Red Rock Reservoir, Marion County, IA

Cost: \$2,115,445.75

The work included waterline replacement, demolition and disposal or salvage of gate valves, fire hydrants and yard hydrants; horizontal directional drilling for water lines; installation of gate valves, yard hydrants, fire hydrants, blowoff assemblies, precast concrete vault and pressure reducing valve; building and drinking fountain connections, site restoration and related incidental work.



Western Resident Office

ACO – Daniel B. Johnson

COR – Caleb Seelye

QA - Joshua Conrad



QUESTIONS?

